



Monona Fire Department

5211 Schluter Road
Monona, Wisconsin 53716
Business Tel • (608) 222-2528



Meeting Agenda

Monona Fire Department Ad-Hoc Committee

June 9th, 2015 1p-3p

City Hall – Large Conference room

- A. Call to Order.
- B. Roll Call.
- C. Approval of Minutes of May 1, 2015
- D. Appearances.
- E. Unfinished Business.
 1. Budget Items
 - Addition of career personnel
 - City of Madison cost formula
 - Cost per capita
 2. Paid on Call & Paid on Premises
 3. Call Volumes
 - Fire
 - EMS
 4. Response times
 - NFPA 1720
- F. New Business.
 1. Blooming Grove decision to contract with the City of Madison
 - Pros
 - Cons
- G. Miscellaneous Business.
- H. Adjournment.

Note: Upon reasonable notice, the City of Monona will accommodate the needs of disabled individuals through auxiliary aids or services. For additional information or to request this service, contact Joan Andrusz at (608) 222-2525 (not a TDD telephone number), FAX (608) 222-9225, or through the City Police Department TDD telephone number 441-0399.

The public is notified that any final action taken at a previous meeting may be reconsidered pursuant to the City of Monona ordinances. A suspension of the rules may allow for final action to be taken on an item of New Business.

It is possible that members of and a possible quorum of members of other governmental bodies of the municipality may be in attendance at the above stated meeting to gather information or speak about a subject, over which they have decision-making responsibility. Any governmental body at the above stated meeting will take no action other than the governmental body specifically referred to above in this notice.

Monona Fire Department Ad –Hoc Committee

May 1, 2015

Members present:

Bob Miller, Mayor, City of Monona

Scott Sullivan, Fire Chief, City of Monona (career)

Eric Rindfleisch, City Administrator, City of McFarland

Brenden Kornell, Firefighter / Paramedic, & Union representative, City of Monona (career)

Patrick Marsh, City Administrator, City of Monona

Karl Franz, Village Administrator, Village of Shorewood Hills

Mary Anne Reed, citizen, City of Monona (former volunteer Monona EMS)

Bob Nelson, Assistant Fire Chief, City of Monona (volunteer)

Laura Laurenzi, Assistant Fire Chief, City of Madison

Kathy Thomas, Alderperson, City of Monona

Not Present:

Brad Keil, Security, W.P.S. Insurance, business representative.

Called to order 0800

Statement of purpose: To consider the future of the Monona Fire Department; how we should operate and staff the department in the next 3,5, and 10years. Looking at changes that have been & are taking place with-in Monona and national trends. Adequate daytime staffing is the main issue. Efforts have been made to increase recruitment, but the department still needs more members. We need to plan for having enough staffing.

This is a discussion with Madison Fire, not merging, just fact finding. We will look at the Shorewood Hills experience. Monona currently shares a building inspector with McFarland. We will be looking at the experiences of others: Shorewood Hills / Madison, and McFarland.

Scott Sullivan, Monona Fire:

Monona career staff has stayed the same 2 people on a 24 hour shift (6 people total) plus the career Chief. The numbers of volunteers has decreased. (Fire interns not counted in these numbers). If one of the career people becomes sick or injured no one for back up, (without calling someone in for overtime). The City of Monona has increased its density and call volume. Fire and EMS are joined as one unit.

Current response protocol for an EMS call; is for both career FF/Paramedics to respond on the ambulance, and for the 1st volunteer to respond to the station to bring the fire truck to the scene.

(In the past 1 career FF/ EMT would take the ambulance and the 2nd would take the fire truck. A volunteer would then respond to the scene to take the truck back to the station, while both career staff transported the patient to the hospital.) Monona has 2 ambulances but currently only staffs one (24/7). (May 1, 2015)

Monona currently has an auto aid agreement with Blooming Grove, but Blooming Grove will likely be taken over by City of Madison July 1, 2015. Monona is quick to call McFarland, but they have many of the same problems with staffing. Monona may call City of Madison.

Monona is starting "I am responding" program. This program lets the volunteers alert the crew responding from the station, how many additional people are responding to the call. The biggest issue for Chief Sullivan is the delay in responding to a fire call when the crew is already on an EMS call.

Patrick Marsh Monona Adm.:

Chief Sullivan has asked for 4 additional career FF/ Paramedics to be hired (up from the current 6) for a total 10 career staff plus the Chief position. The City would need to go to referendum to O K the money for this.

Karl Franz, Shorewood Hills:

Shorewood Hills faced a similar density boom. He stated he would relate what their process was, and while it worked for Shorewood, "it may not be the answer for any other city." Shorewood Hills used an outside consulting firm, "to take the emotions out of it". They looked at models of staffing and then options open to them. Shorewood would need more equipment, (new high rise building – no ladder truck). They felt they would need to double their budget, needed new fire station, and needed more staff. They negotiated a 50 year contract with the City of Madison. Payments are now the same as they currently spending on their fire service. An inflation factor is built in as is increased payment for increased development. A fee is charged to developers to cover the increased payments to the City of Madison. This agreement was negotiated with the Shorewood Hills City Administrator, the Mayor of Madison, and the City of Madison Fire Department.

Laura Laurenzi, City of Madison Fire:

The City of Madison Fire Department has not approached other departments to take them over. What the Cities / villages spend on their Fire / EMS service (budget) is a matter of public record, "so don't lowball us." How do you set a mechanism in place to account for current budget plus growth? Not only is Monona growing, but Madison is also growing. An issue for all fire departments; increased risk to fire fighters & citizens in high rise fires. For City of Madison to take over Shorewood Hills, Madison did not need to add a Fire Station or staff to cover call volume and geography / response time; because near-by Madison Station 9 was under – utilized with the lowest call volume in the city. EMS calls are frequently covered by a City of Madison Medic unit that is just leaving near-by UW Hospital Emergency Department after a prior call.

City of Madison response times: with-in 5 min. respond with "1st –in" vehicle staffed with 4 firefighters.

In 10 min. can have 24 firefighters responding by pulling from other territories.

Karl Franz, Shorewood Hills:

The Shorewood Hills Fire building was taken over by Public Works, which needed more space. Shorewood Hills had fewer career people to displace than Monona would have. "We worked to build consensus before making the change." The total call volume was easily assumed by the City of Madison Station 9.

Bob Miller, Monona Mayor:

Monona Fire Department has great community involvement in Monona. They are the face of the city, holding kids events.

Karl Franz, Shorewood Hills:

The Shorewood Hills EMS Association and Fire Association are still active. We put a clause in the contract with the City of Madison that they will supply a fire truck for the 4 of July parade. Shorewood Hill's past was respected by the City of Madison. They put a Shorewood Hills decal on one of the Station 9 fire trucks and the ambulance housed at Station 9.

Brenden Kornell, FF, Monona, Union rep.:

"I am worried about having adequate people to respond to even alarms. It may be nothing or it may be a huge call."

Mayor Bob Miller, Monona; asked Karl Franz, Shorewood Hills;

"What bumps in the road did you encounter in merger with City of Madison?"

Karl Franz, Shorewood Hills:

The Madison alderpersons worried that the agreement would take away services from the City of Madison for too little money in return. ("The rich people of Shorewood Hills can afford to pay more".) The contract increase costs to Shorewood as the population increases. The developers will pay this increased fee so the Shorewood Hills taxpayers will not get hit with rising costs. The issue of tradition was addressed by putting the Shorewood Hills logo on a Madison ambulance.

Eric Rindfleisch, McFarland:

McFarland is currently looking for a new EMS/Fire Chief.

They give extra compensation to their Public Works crew who respond to fire calls. McFarland can see similar issues to Monona down the road. Their Public Works staffing pool has decreased over the years. McFarland also has a Haz Mat exposure. Recently Fire and EMS merged. McFarland has less of an (EMS) mutual aid response need than Monona, but they depend on Monona. They will depend more on Monona (Fire / EMS) with Blooming Grove gone.

Scott Sullivan, Chief, Monona Fire:

2014 statistics: Monona received mutual aid from: Blooming Grove 53 calls, City of Madison 13 calls (6 from Station 5, 6 from Station 6, 1 from Station?), 1 call from Town of Madison, & 4 calls from McFarland.

In May there will be a vote in Blooming Grove for Fire / EMS being taken over by City of Madison. This will be effective July 1, 2015. City of Madison will also cover a contract with Town of Burke for EMS calls.

For EMS there is a question will City of Madison be able to take over this increased call volume with current staff?

Monona now provides EMS mutual aid to City of Madison, year to date; 13 ALS (Advanced Life Support) calls for closest unit sent the Monona ambulance into Madison. The majority of Blooming Grove EMS calls responding to Monona come when Monona EMS is out on a call already. (Blooming Grove takes the 2nd call.)

If Monona adds 4 career people to its staff, then they can staff 3 FF/Paramedics on each shift plus a 4th person Monday – Friday Day shift. (Does not count Chief or interns)

First –out –door staffing would be 2 FF/ Paramedics on a fire engine, and 2 FF/Paramedics on the ambulance, plus current interns.

Question from Mayor Bob Miller, Monona to Chief Scott Sullivan, Monona ;

What would a partnership with McFarland look like?

Scott Sullivan, Monona Fire:

One department, 2 stations, a paramedic ambulance based in Monona. One engine staffed in McFarland that would respond in to Monona as 2nd in truck. Some other Wisconsin communities have consolidated their departments. There are also budget issues.

Brenden Kronell, FF, Monona, Union Rep.:

There are currently only enough (career) people at either McFarland or Monona to staff an ambulance with 2 people. You would need 4 people at each station.

Bob Miller, Mayor, Monona:

On capital budget ; there may be some savings with equipment, but because of geography, will need double equipment and will need to increase the operational budget.

Patrick March, Adm., Monona:

There will be savings on the salary of one chief.

Brenden Kornell, FF, Monona, Union Rep.:

The Chief does not have enough time to do Pre-Planning now, with inspections and call volume, that is why another paid officer position is needed.

Bob Miller, Mayor, Monona:

The main goal is safety, but we will also look at cost.

Scott Sullivan, Chief Monona Fire:

With “paid on premises” , if the person works over 29 hours / week will need to pay benefits.

“Paid – on – call” hours has increased response numbers for volunteers.

Re: interns; the 1st year they do not respond as much, because they are concerned about failing an exam due to lack of sleep. If they fail 2 exams they are out of the program. During the 2nd year of their internship there is a better response. Over all it is good to have interns.

Mary Anne Reed, citizen, Monona:

There is value in having both career and volunteer staffing. The volunteers bond with the community, not only providing the comfort of a neighbor responding to an EMS call that knows your history, but also in the community building activities; working with kids, & fire safety. Madison Fire is currently promoting the first response CPR cell phone app. for faster response.

Kathy Thomas, Alderperson, Monona:

I see this as tradition vs. a math exercise. The Fire Department is part of other community activities, such as The 4th of July Festival.

Question from; Bob Miller, Mayor, Monona to Chief Laurenzi , Madison Fire:

What is the role for volunteers if City of Madison takes over?

Laura Laurenzi, City of Madison Fire:

Madison has no role for volunteers currently. Madison does want to have increasing interaction with the community. Madison is looking at could volunteers be used to help with the homeless who frequently use emergency services? No defined roles now but in the future may look how volunteers could be used to augment paid staff. Want paid staff only for Fire and EMS response / "red light and siren calls". There is "too great a risk and too much training needed to use volunteers on Fire / EMS calls."

Karl Franz, Shorewood Hills:

The Shorewood Hills Fire Association currently meets monthly and works on community projects, like repairing roof on park shelter. The Shorewood Hills officers are older; there was no one to follow them. Shorewood Hills has a problem recruiting younger community activists. There is a "Brotherhood" but when they looked to the future they "cannot use mutual aid as a staffing plan".

Bob Nelson: Monona Fire (volunteer):

"We have given the City of Monona a great financial deal over the past 60 years. We have scrimped and saved to save the city money, kind of like our streets were let go. Now we have the chance to increase community involvement through Face Book and other social media. We are training people who are leaving for other departments."

[M.A. Reed clarification note(both paid and volunteer staff have gone on to work for other better paying departments.)]

Bob Miller, Mayor, Monona:

I recognize the safety concerns in the first few minutes of a fire call. We are going to take steps. The (City of Monona) budget is coming up in the next 2 months; it will not be easy, especially with the state budget. I do see us working closer with McFarland. Our immediate concern / need is Safety for Fire / EMS personnel and for the citizens.

Laura Laurenzi, City of Madison Fire:

In next year's budget, 2016, we are asking for another Medic unit ; ambulance & need 9 Paramedics to staff it. This is due to increased demand, also with absorbing Blooming Grove & Town of Burke this will be 600 more calls. We will also ask for building Station 14, but it is unknown if this will be approved.

Question from; Mary Anne Reed, citizen, Monona, to Brenden Kornell, FF, Monona, Union Rep.

"We have heard what Chief Sullivan is asking for staffing, if you had unlimited money, what would be your wish for staffing?"

Brenden Kornell, FF, Monona, Union Rep.:

Goal would be to staff with 6 people on / day plus a chief. This would require 16 additional people hired to reach this goal. NFPA (National Fire Protection Agency) standards are now 4 people on a truck with air packs & 2 people on an ambulance.

Bob Miller, Mayor, Monona:

The Dane County Fire Chiefs Association is more cooperative now.

It will be a challenge to meet the NFPA Standards.

The Town of Madison may go away.

Possible options, and there may be others & / or combinations of options:

1. Monona to add more staff
2. Join McFarland
3. Join City of Madison.

We Need to do something as the status quo will not work.

We currently have an ALS agreement with City of Madison but not a basic (Life Support level) agreement. Unsure if City of Madison willing or able to provide the level of mutual aid to Monona for basic level calls that Blooming Grove provided to Monona.

Laura Laurenzi, City of Madison Fire:

Madison will not be able to absorb the volume of calls that Blooming Grove covered for the City of Monona.

Question, Mary Anne Reed, Citizen Monona asked Chief Laurenzi, City of Madison Fire:

Are there currently any charges for a MABAS (Mutual Aid Box Alarm System) response?

Laura Laurenzi, City of Madison Fire:

Currently there are no charges for a MABAS response. However City of Madison Fire views MABAS as only for a disaster “all local resources exhausted” and separate from mutual aid.

Bob Miller, Mayor, Monona:

Next meeting in July:

Where do we stand with Blooming Grove?

Bring cost & data points

Be open to more solutions.

DRAFT

AMBULANCE

	2011 ACTUAL	2012 ACTUAL	2013 ACTUAL	TO DATE 6/30/14	2014 YEAR END ESTIMATED	2014 BUDGET	2015 BUDGET	2015 COMMITTEE BUDGET	2015 Proposed BUDGET	2015 ADOPTED BUDGET
REVENUES										
GENERAL PROPERTY TAXES	133,572	135,557	135,557	138,911	138,911	138,911	88,281	123,568	112,161	112,161
PUBLIC SAFETY AIDS	-	5,107	5,222	-	5,200	5,370	5,046	5,046	5,046	5,046
AMBULANCE FEE	250,800	284,459	321,625	158,021	313,000	312,218	356,000	356,000	356,000	356,000
FUND BALANCE APPLIED	-	-	-	-	-	-	-	-	-	-
TRANSFER FROM GENERAL FUND	-	-	-	-	-	-	-	-	-	-
	384,372	4425,133	462,404	297,932	457,111	456,499	449,307	484,614	473,207	473,207
EXPENSES										
EMS SALARIES	190,702	200,059	210,031	107,039	217,337	217,337	226,124	253,585	226,124	226,124
LONGEVITY PAY	-	-	-	-	-	-	7,000	7,000	7,000	7,000
LEAVE WAGES	6,546	5,895	6,363	1,239	6,300	7,000	6,000	6,000	6,000	6,000
WAGES, PART TIME	4,803	3,500	4,652	4,608	6,000	4,635	6,000	6,000	6,000	6,000
OVERTIME	36,091	32,725	26,864	13,229	28,458	30,000	30,000	25,000	27,400	27,400
SCHEDULED OVERTIME	-	-	-	-	-	-	-	-	-	-
FICA	17,882	19,129	19,443	9,711	18,419	19,811	20,588	22,305	20,588	20,588
WISCONSIN RETIREMENT	33,589	41,589	34,743	17,163	30,041	30,041	31,218	33,824	31,218	31,218
LIFE & DISABILITY INSURANCE	580	289	110	38	42	700	700	700	700	700
HEALTH INSURANCE	55,735	48,242	43,791	19,784	43,733	43,723	37,195	45,717	37,195	37,195
PROFESSIONAL DEVELOPMENT	3,604	2,494	10,234	2,989	19,000	19,000	15,000	15,000	15,000	15,000
UNIFORM ALLOWANCE	2,566	2,474	1,623	261	2,500	2,500	2,500	2,500	2,500	2,500
EMS STIPENDS	1,844	7,959	4,357	-	7,200	3,830	6,000	6,000	6,000	6,000
PHYSICAL EXAMINATIONS	622	915	1,838	-	1,600	1,600	1,600	1,600	1,600	1,600
EXPENSE ALLOWANCE	-	-	-	-	-	-	-	-	-	-
TELEPHONE	665	716	1,204	476	1,200	1,200	1,200	1,200	1,200	1,200
SERVICE CONTRACTS	24,720	23,047	22,186	10,667	22,000	21,700	25,000	25,000	25,000	25,000
SERVICE CONTRACTS - AMB SOFTWARE	-	-	-	-	-	-	-	-	-	-
OFFICE SUPPLIES	-	383	248	-	250	250	250	250	250	250
POSTAGE	44	13	-	-	-	-	-	-	-	-
EMS SUPPLIES	10,883	12,290	20,425	9,578	18,000	16,000	16,000	16,000	16,000	16,000
DUES & SUBSCRIPTION	360	485	135	125	500	500	600	500	600	500
EMS INTERM PROGRAM	5,809	2,905	5,345	1,275	18,240	18,240	5,000	5,000	5,000	5,000
EQUIPMENT MAINT & REPAIR	6,865	3,602	3,434	1,254	7,400	7,400	7,400	7,400	7,400	7,400
BUILDING MAINT & REPAIR	-	-	-	-	-	-	-	-	-	-
FUELS & ADDITIVES	5,329	5,817	5,507	2,956	6,500	6,432	6,432	6,432	6,432	6,432
OUTSIDE SERVICES	-	-	-	-	-	-	-	-	-	-
EMS COVERAGE	-	-	-	-	-	-	-	-	-	-
EMS FTE	-	-	-	-	-	-	-	-	-	-
EMS EQUIPMENT	(588)	4,915	7,576	450	1,600	1,600	1,600	1,600	1,600	1,600
CAPITAL OUTLAY	-	998	644	-	850	1,000	-	-	-	-
AMBULANCE SOFTWARE PROGRAM	-	-	-	-	-	-	-	-	-	-
TRANSFER TO GENERAL FUND	2,000	2,000	2,000	-	2,000	2,000	2,000	2,000	2,000	2,000
	\$ 410,585	\$422,411	432,752	202,722	\$ 457,160	456,499	449,307	484,614	473,207	473,207
PERSONNEL										
NON-PERSONNEL										
TOTAL										
			CURRENT YEAR		PROPOSED YEAR					
			353,247		356,226				1%	
			103,262		116,982				13%	
			456,499		473,207				4%	

FIRE PROTECTION

	2011 ACTUAL	2012 ACTUAL	2013 ACTUAL	TO DATE 8/30/14	2014 YEAR END ESTIMATED	2014 BUDGET	2015 BUDGET	2015 COMMITTEE BUDGET	2015 Proposed BUDGET	2015 ADOPTED BUDGET
100-52-52200-110	183,570	190,036	201,036	102,411	209,000	208,231	216,791	244,251	216,791	216,791
100-52-52200-117										
100-52-52200-118	6,546	5,995	6,363	1,239	6,400	6,100	6,500	6,500	6,500	6,500
100-52-52200-119	1,437	1,750	2,680	3,452	5,000	2,655	5,000	5,000	5,000	5,000
100-52-52200-120	36,374	32,725	26,884	13,229	27,600	30,000	30,000	28,000	27,500	27,500
100-52-52200-121										
100-52-52200-130										
100-52-52200-131	17,735	18,285	18,614	8,454	18,850	18,894	19,759	21,477	19,759	19,759
100-52-52200-132	33,643	34,061	33,957	16,840	28,000	27,934	29,962	32,957	29,962	29,962
100-52-52200-133	586	34,270	102	34	38	600	600	600	600	600
100-52-52200-134	57,700	46,035	39,536	18,600	36,000	41,354	34,638	43,160	34,638	34,638
100-52-52200-150	8,081	5,987	3,323	960	7,100	7,100	7,100	7,100	7,100	7,100
100-52-52200-150	3,185	3,133	2,143	597	3,200	3,200	3,200	3,200	3,200	3,200
100-52-52200-150	720	900	1,747	-	900	1,900	1,900	1,900	1,900	1,900
100-52-52200-190										
100-52-52200-191	9,500	9,500	9,800	76	9,500	9,800	9,800	9,800	9,800	9,800
100-52-52200-191										
100-52-52200-221	669	478	395	181	500	600	400	400	400	400
100-52-52200-222	1,863	1,316	1,412	293	2,550	2,805	1,500	1,500	1,500	1,500
100-52-52200-310	891	488	481	397	600	500	500	500	500	500
100-52-52200-312		(5)								
100-52-52200-340	2,689	2,420	2,603	1,042	3,000	3,500	3,000	3,000	3,000	3,000
100-52-52200-350	14,775	13,794	14,804	8,423	16,000	14,000	14,500	14,500	14,500	14,500
100-52-52200-351	1,119	193	812	200	400	200	200	200	200	200
100-52-52200-373	3,214	2,455	2,754	1,684	3,000	3,000	3,000	3,000	3,000	3,000
100-52-52200-374	4,686	3,528	6,075	3,275	6,240	6,240	5,100	6,100	6,100	6,100
100-52-52200-375					2,500	1,000	-	-	-	-
100-52-52200-371			194							
100-52-52200-370	4,795	5,347	9,901	3,400	7,000	7,000	6,300	6,300	6,300	6,300
100-52-52200-372	5,820	5,820	7,000	1,255	12,000	12,000	46,000	46,000	39,000	39,000
100-52-52200-373									17,500	17,500
100-52-52200-374									9,000	9,000
100-52-52200-810	3,476	1,878	5,392	1,209	5,000	5,000	5,500	5,500	469,050	469,050
	\$400,604	\$386,268	397,268	190,039	408,778	413,373	452,050	487,365	469,050	469,050
PERSONNEL			336,768		340,750	1%				
NON-PERSONNEL			77,805		128,302	95%				
TOTAL			413,373		469,052	13%				

CURRENT YEAR

PROPOSED YEAR

DIFFERENCE

Monthly Billing Summary



	JAN	FEB	MAR	APR	MAY	JUN	JUL	AUG	SEP	OCT	NOV	DEC	Total
# OF BILLABLE RUNS BY DOS	76	60	74	65	0	0	0	0	0	0	0	0	275
# OF NON-BILLABLE RUNS BY DOS	21	19	28	39	0	0	0	0	0	0	0	0	107
TOTAL CHARGES BY DOS	\$59,293.52	\$49,135.79	\$62,848.89	\$62,791.35	\$0.00	\$0.00	\$0.00	\$0.00	\$0.00	\$0.00	\$0.00	\$0.00	\$234,009.55
Charges													
<None>	1,335.00	0.00	0.00	0.00	0.00	0.00	0.00	0.00	0.00	0.00	0.00	0.00	1,335.00
Bill Patient	3,753.78	6,397.98	9,481.88	4,140.57	0.00	0.00	0.00	0.00	0.00	0.00	0.00	0.00	23,774.02
Facility Contract	0.00	1,065.00	-703.75	0.00	0.00	0.00	0.00	0.00	0.00	0.00	0.00	0.00	391.25
Insurance	11,686.71	17,028.97	15,676.49	18,157.04	0.00	0.00	0.00	0.00	0.00	0.00	0.00	0.00	62,550.21
Medicaid	13,379.80	5,476.00	11,439.99	12,307.00	0.00	0.00	0.00	0.00	0.00	0.00	0.00	0.00	42,602.59
Medicare	25,499.78	23,594.75	26,314.29	28,113.47	0.00	0.00	0.00	0.00	0.00	0.00	0.00	0.00	103,522.29
Private Pay	0.00	0.00	0.00	0.00	0.00	0.00	0.00	0.00	0.00	0.00	0.00	0.00	0.00
Total Charges	55,654.87	53,563.71	62,208.70	62,718.08	0.00	0.00	0.00	0.00	0.00	0.00	0.00	0.00	234,145.36
# OF RUNS BY DATE ENTERED	71	65	74	65	0	0	0	0	0	0	0	0	275
Payments													
Bill Patient	1,406.14	4,172.64	2,407.06	3,383.65	0.00	0.00	0.00	0.00	0.00	0.00	0.00	0.00	11,369.49
Facility Contract	0.00	0.00	375.38	0.00	0.00	0.00	0.00	0.00	0.00	0.00	0.00	0.00	375.38
Insurance	9,966.75	13,911.93	12,470.13	19,288.20	0.00	0.00	0.00	0.00	0.00	0.00	0.00	0.00	55,632.01
Medicaid	2,676.39	2,755.28	2,625.92	3,542.29	0.00	0.00	0.00	0.00	0.00	0.00	0.00	0.00	11,599.88
Medicare	11,228.39	9,388.55	7,963.23	7,668.75	0.00	0.00	0.00	0.00	0.00	0.00	0.00	0.00	36,248.92
Private Pay	0.00	0.00	0.00	0.00	0.00	0.00	0.00	0.00	0.00	0.00	0.00	0.00	0.00
Payment - TRIP													
Collection Agency	106.81	235.00	356.16	890.04	0.00	0.00	0.00	0.00	0.00	0.00	0.00	0.00	1,578.01
Interest Received	0.00	0.00	0.00	0.00	0.00	0.00	0.00	0.00	0.00	0.00	0.00	0.00	0.00
Returns	0.00	-884.17	0.00	-715.88	0.00	0.00	0.00	0.00	0.00	0.00	0.00	0.00	-1,600.05
Total Payments	25,384.48	29,579.23	26,197.98	34,042.05	0.00	0.00	0.00	0.00	0.00	0.00	0.00	0.00	115,203.54
Adjustments													
Bill Patient	0.00	0.00	0.00	0.00	0.00	0.00	0.00	0.00	0.00	0.00	0.00	0.00	0.00
Facility Contract	0.00	0.00	0.00	0.00	0.00	0.00	0.00	0.00	0.00	0.00	0.00	0.00	0.00
Insurance	1,309.20	707.47	435.63	3,205.71	0.00	0.00	0.00	0.00	0.00	0.00	0.00	0.00	5,658.01
Medicaid	8,647.19	4,515.89	8,202.92	11,297.86	0.00	0.00	0.00	0.00	0.00	0.00	0.00	0.00	32,663.86
Medicare	12,675.69	12,597.86	12,523.39	16,742.55	0.00	0.00	0.00	0.00	0.00	0.00	0.00	0.00	54,539.49
Interest	0.00	0.00	0.00	0.00	0.00	0.00	0.00	0.00	0.00	0.00	0.00	0.00	0.00
Professional Courtesy	0.00	0.00	0.00	0.00	0.00	0.00	0.00	0.00	0.00	0.00	0.00	0.00	0.00
Collection Service Fee													
Write Off - Bad Debt	0.00	0.00	0.00	0.00	0.00	0.00	0.00	0.00	0.00	0.00	0.00	0.00	0.00
Write Off - Bankruptcy													
Write Off - To Collections	-106.81	3,599.04	-326.00	-326.66	0.00	0.00	0.00	0.00	0.00	0.00	0.00	0.00	2,899.57
Write Off - Others	1,095.00	230.00	720.00	5.00	0.00	0.00	0.00	0.00	0.00	0.00	0.00	0.00	1,990.00
Total Adjustments	23,560.27	21,650.26	21,556.94	30,924.46	0.00	0.00	0.00	0.00	0.00	0.00	0.00	0.00	97,680.93

Monthly Billing Summary



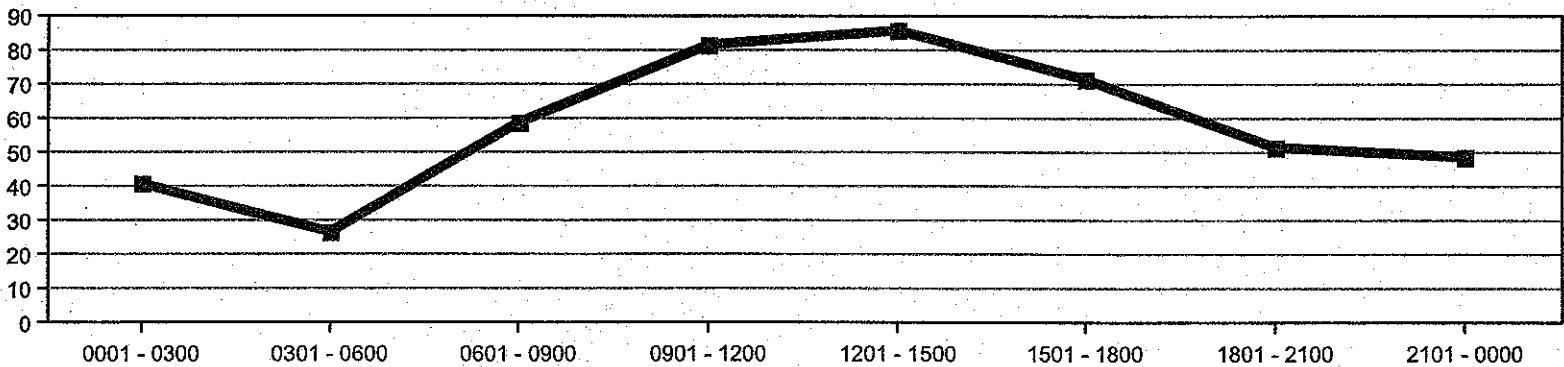
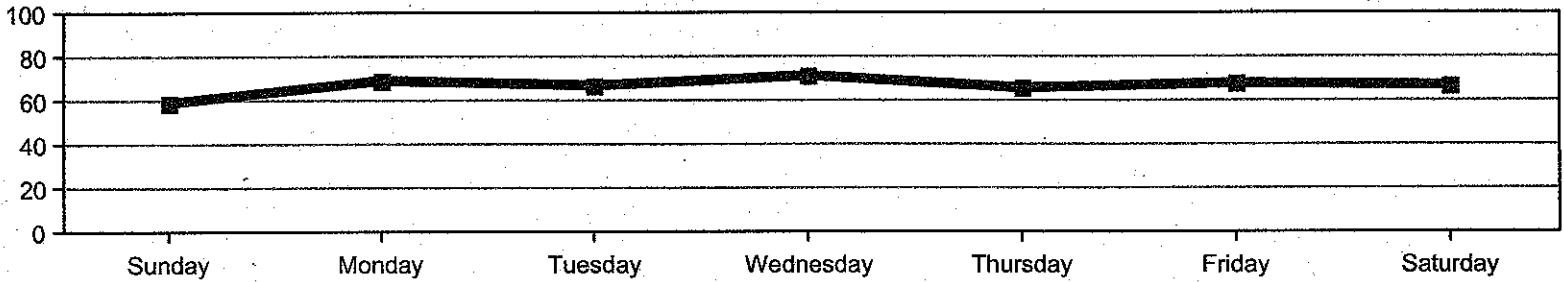
	JAN	FEB	MAR	APR	MAY	JUN	JUL	AUG	SEP	OCT	NOV	DEC	Total
# OF BILLABLE RUNS BY DOS	0	0	0	0	0	0	0	0	0	35	56	63	154
# OF NON-BILLABLE RUNS BY DOS	0	0	0	0	0	0	0	0	0	21	26	18	65
TOTAL CHARGES BY DOS	\$0.00	\$0.00	\$0.00	\$0.00	\$0.00	\$0.00	\$0.00	\$0.00	\$0.00	\$24,418.41	\$43,981.64	\$44,234.25	\$112,534.30
Charges													
<None>	0.00	0.00	0.00	0.00	0.00	0.00	0.00	0.00	0.00	0.00	0.00	0.00	0.00
Bill Patient	5,868.95	2,702.79	4,678.00	6,674.00	5,075.87	2,815.39	5,428.50	1,377.99	3,910.53	2,201.47	2,580.00	7,563.04	50,876.53
Facility Contract	0.00	0.00	0.00	0.00	0.00	0.00	0.00	0.00	0.00	0.00	0.00	0.00	0.00
Insurance	15,659.96	7,838.92	6,368.09	11,970.81	15,710.28	9,630.20	14,375.87	18,134.72	14,431.00	13,888.25	7,521.00	9,186.94	144,716.04
Medicaid	7,476.50	3,308.95	5,366.80	5,242.63	8,264.58	7,277.00	11,708.82	13,159.34	5,049.00	5,491.00	1,290.00	14,905.48	88,541.10
Medicare	26,420.12	30,789.47	27,222.46	26,201.64	25,729.74	24,061.90	21,891.95	23,140.54	26,992.98	24,679.92	20,870.92	24,066.43	302,150.07
Private Pay	0.00	0.00	0.00	0.00	0.00	0.00	0.00	0.00	0.00	0.00	0.00	0.00	0.00
Total Charges	55,425.63	44,621.13	43,635.35	50,089.08	54,780.47	43,784.49	53,405.14	55,812.59	50,383.51	46,260.64	32,361.92	56,725.89	586,285.74
# OF RUNS BY DATE ENTERED	70	56	61	73	70	66	79	88	67	65	43	75	813
Payments													
Bill Patient	2,189.50	2,468.81	3,714.95	3,098.67	3,695.36	1,908.62	2,377.99	1,889.63	1,363.87	3,841.75	5,396.48	1,798.84	33,754.47
Facility Contract	0.00	0.00	0.00	0.00	0.00	0.00	0.00	0.00	0.00	0.00	0.00	0.00	0.00
Insurance	10,534.38	7,631.35	11,054.35	10,525.85	10,776.11	14,965.65	13,583.94	8,920.39	11,196.36	20,952.74	9,076.02	9,204.39	138,421.54
Medicaid	3,020.49	1,209.05	1,613.70	689.15	2,005.71	2,110.72	2,843.32	3,613.90	2,172.53	2,344.18	1,438.51	2,137.23	25,198.49
Medicare	15,221.40	6,355.72	20,216.47	11,664.25	12,163.30	11,405.23	7,295.55	12,409.89	8,507.79	10,406.99	9,812.96	12,688.49	138,137.74
Private Pay	830.00	0.00	0.00	0.00	0.00	0.00	0.00	0.00	0.00	0.00	0.00	0.00	830.00
Payment - TRIP													
Collection Agency	137.06	137.06	65.00	215.66	179.00	1,025.00	528.41	401.17	1,062.58	434.50	85.00	108.90	4,379.34
Interest Received	0.00	0.00	0.00	0.00	0.00	0.00	0.00	0.00	0.00	0.00	0.00	0.00	0.00
Refunds	-760.00	0.00	0.00	-747.20	-871.97	0.00	-88.61	-562.57	-89.01	-314.05	-1,006.95	0.00	-4,440.36
Total Payments	31,182.84	17,801.99	36,664.47	25,446.38	27,947.51	31,415.22	25,530.60	26,672.11	24,214.12	37,666.11	24,802.02	25,937.85	336,281.22
Adjustments													
Bill Patient	0.00	0.00	0.00	0.00	0.00	0.00	0.00	0.00	12.00	0.00	0.00	0.00	12.00
Facility Contract	0.00	0.00	0.00	0.00	0.00	361.62	0.00	0.00	0.00	0.00	0.00	0.00	361.62
Insurance	26.21	523.54	442.43	707.48	881.29	622.19	935.44	765.15	-651.36	3,274.75	25.00	772.59	8,324.71
Medicaid	4,890.19	5,067.43	2,490.71	6,892.90	5,743.64	6,556.98	10,886.86	9,516.06	6,492.86	2,798.56	158.64	11,746.23	72,231.16
Medicare	11,761.03	11,504.55	13,105.60	7,923.77	12,944.87	11,658.19	7,211.45	7,787.30	12,017.87	11,108.12	11,409.38	14,253.06	132,885.19
Interest	0.00	0.00	0.00	0.00	0.00	0.00	0.00	0.00	0.00	0.00	0.00	0.00	0.00
Professional Courtesy	0.00	0.00	0.00	0.00	0.00	175.00	620.00	0.00	0.00	0.00	0.00	0.00	925.00
Collection Service Fee													
Write Off - Bad Debt	0.00	0.00	0.00	0.00	0.00	0.00	0.00	0.00	0.00	0.00	0.00	0.00	0.00
Write Off - Bankruptcy													
Write Off - To Collections	2,124.17	2,877.83	4,503.89	694.42	9,567.99	-1,983.00	-528.41	-310.00	-1,067.99	-215.02	-85.00	-76.78	15,502.10
Write Off - Others	1.00	4.40	-179.64	0.00	1,314.00	-6.13	0.00	17.76	432.13	8.92	11.85	748.00	2,352.29
Total Adjustments	18,802.60	19,977.75	20,362.99	15,218.57	30,451.79	17,384.85	19,125.34	17,776.27	17,235.61	16,985.33	11,519.87	27,573.10	232,384.07

Call Volumes by Day and Hour
From 01/01/15 To 06/05/15
Report Printed On: 06/05/2015

Hour	Sunday	Monday	Tuesday	Wednesday	Thursday	Friday	Saturday	Total	Average	Percentage
0001 - 0300	7	8	4	7	2	7	6	41	6	8.76%
0301 - 0600	2	3	8	3	3	5	3	27	4	5.77%
0601 - 0900	6	14	4	14	6	9	6	59	8	12.61%
0901 - 1200	10	12	15	9	14	10	12	82	12	17.52%
1201 - 1500	13	12	7	15	13	14	12	86	12	18.38%
1501 - 1800	11	12	10	7	10	8	14	72	10	15.38%
1801 - 2100	7	3	11	8	12	6	5	52	7	11.11%
2101 - 0000	3	5	8	9	6	9	9	49	7	10.47%
Total	59	69	67	72	66	68	67	468	67	100.00%
Average	7	9	8	9	8	9	8	59		
Percentage	12.61%	14.74%	14.32%	15.38%	14.10%	14.53%	14.32%	100.00%		

Call Volumes by Day and Hour

Sunday
 Monday
 Tuesday
 Wednesday
 Thursday
 Friday
 Saturday



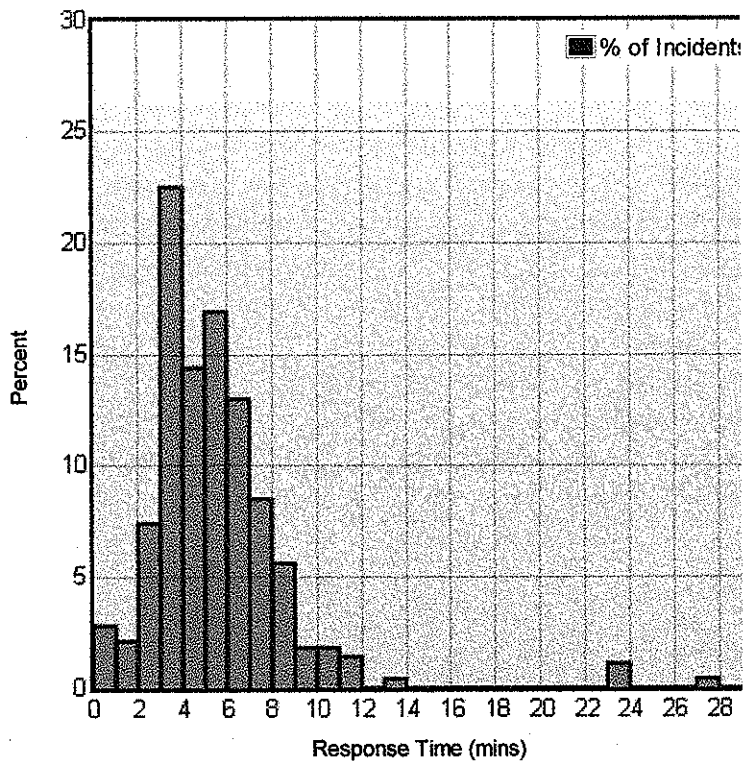
Search Criteria
Dates From 01/01/2015 To 06/05/2015 (mm/dd/yyyy)
Service City of Monona Fire Department
Crew Member Role All
Type of Service Requested All
Patient Disposition All

Report Description

Incident Response Time Analysis

Date Range 03/05/2015 to 06/05/2015
 Total # of Runs Fitting Criteria 284 runs
 Average Response Time 5 mins
 Service(s) City of Monona Fire Department
 Incident Type(s) All

Response Time	# of Incident Responses	% of Incident Responses
0 mins	8	2.8%
1 mins	6	2.1%
2 mins	21	7.4%
3 mins	64	22.5%
4 mins	41	14.4%
5 mins	48	16.9%
6 mins	37	13%
7 mins	24	8.5%
8 mins	16	5.6%
9 mins	5	1.8%
10 mins	5	1.8%
11 mins	4	1.4%
12 mins	0	-
13 mins	1	0.4%
14 mins	0	-
15 mins	0	-
16 mins	0	-
17 mins	0	-
18 mins	0	-
19 mins	0	-
20 mins	0	-
21 mins	0	-
22 mins	0	-
23 mins	3	1.1%
24 mins	0	-
25 mins	0	-
26 mins	0	-
27 mins	1	0.4%
28 mins	0	-
29 mins	0	-
30 mins	0	-



Report Description

[Back To Filters](#)

Call Percentage
From 01/01/15 To 06/05/15
Report Printed On: 06/05/2015

Personnel ID	Personnel	Actual # of Calls (%) For the Assigned Station	Revised # of Calls (%) For the Assigned Station	Actual # of Calls (%) For All Stations (based on responded calls)	Revised # of Calls (%) For All Stations (based on responded calls)	Actual # of Calls (%) For All Stations (based on all calls)
City of Monona Fire Department						
Station 1						
2011-Int 01	Adams, Matthew	0 of 169 (0.00%)	0 of 169 (0.00%)	0 of 169 (0.00%)	0 of 169 (0.00%)	0 of 169 (0.00%)
15-04	Andrews, Marcus	6 of 169 (3.55%)	6 of 169 (3.55%)	6 of 169 (3.55%)	6 of 169 (3.55%)	6 of 169 (3.55%)
15-05	Beatty, William	0 of 169 (0.00%)	0 of 169 (0.00%)	0 of 169 (0.00%)	0 of 169 (0.00%)	0 of 169 (0.00%)
11-00011	Berkan, Brian	41 of 169 (24.26%)	41 of 169 (24.26%)	41 of 169 (24.26%)	41 of 169 (24.26%)	41 of 169 (24.26%)
MOF7	Beyer, James	45 of 169 (26.63%)	45 of 169 (26.63%)	45 of 169 (26.63%)	45 of 169 (26.63%)	45 of 169 (26.63%)
MOP31	BISBEE, JACOB	37 of 169 (21.89%)	37 of 169 (21.89%)	37 of 169 (21.89%)	37 of 169 (21.89%)	37 of 169 (21.89%)
11-00030	Bodin, Alex	38 of 169 (22.49%)	38 of 169 (22.49%)	38 of 169 (22.49%)	38 of 169 (22.49%)	38 of 169 (22.49%)
11-00013	Bolha, Matthew	6 of 169 (3.55%)	6 of 169 (3.55%)	6 of 169 (3.55%)	6 of 169 (3.55%)	6 of 169 (3.55%)
EMT-9-14-13	Carey, Brian	0 of 169 (0.00%)	0 of 169 (0.00%)	0 of 169 (0.00%)	0 of 169 (0.00%)	0 of 169 (0.00%)
10-00015	Dederich, Nathan	13 of 169 (7.69%)	13 of 169 (7.69%)	13 of 169 (7.69%)	13 of 169 (7.69%)	13 of 169 (7.69%)
60-07	Dinkel, Tamara	31 of 169 (18.34%)	31 of 169 (18.34%)	31 of 169 (18.34%)	31 of 169 (18.34%)	31 of 169 (18.34%)
FF-1306-09	Duensing, Joel	14 of 169 (8.28%)	14 of 169 (8.28%)	14 of 169 (8.28%)	14 of 169 (8.28%)	14 of 169 (8.28%)
MOF3	EKLOF, DANIEL	118 of 169 (69.82%)	118 of 169 (69.82%)	118 of 169 (69.82%)	118 of 169 (69.82%)	118 of 169 (69.82%)
EMT-4267-04	Enmerich, Bradley	3 of 169 (1.78%)	3 of 169 (1.78%)	3 of 169 (1.78%)	3 of 169 (1.78%)	3 of 169 (1.78%)
10-00017	Fisher, Andre	3 of 169 (1.78%)	3 of 169 (1.78%)	3 of 169 (1.78%)	3 of 169 (1.78%)	3 of 169 (1.78%)
13-19	Ford, Jenna	19 of 169 (11.24%)	19 of 169 (11.24%)	19 of 169 (11.24%)	19 of 169 (11.24%)	19 of 169 (11.24%)
MOP26	HALVERSON, KRISTEN	30 of 169 (17.75%)	30 of 169 (17.75%)	30 of 169 (17.75%)	30 of 169 (17.75%)	30 of 169 (17.75%)
MOF6	Hamacher, Tim	27 of 169 (15.98%)	27 of 169 (15.98%)	27 of 169 (15.98%)	27 of 169 (15.98%)	27 of 169 (15.98%)
11-00014	Hamm, Taylor	31 of 169 (18.34%)	31 of 169 (18.34%)	31 of 169 (18.34%)	31 of 169 (18.34%)	31 of 169 (18.34%)
15-02	Haskell, Steven	0 of 169 (0.00%)	0 of 169 (0.00%)	0 of 169 (0.00%)	0 of 169 (0.00%)	0 of 169 (0.00%)
15-03	Hillebrand, Brian	5 of 169 (2.96%)	5 of 169 (2.96%)	5 of 169 (2.96%)	5 of 169 (2.96%)	5 of 169 (2.96%)
MOP27	Holt, Greg	11 of 169 (6.51%)	11 of 169 (6.51%)	11 of 169 (6.51%)	11 of 169 (6.51%)	11 of 169 (6.51%)
6208	Kornell, Brenden	28 of 169 (16.57%)	28 of 169 (16.57%)	28 of 169 (16.57%)	28 of 169 (16.57%)	28 of 169 (16.57%)
MOP22	LOCKWOOD, JOHN	66 of 169 (39.05%)	66 of 169 (39.05%)	66 of 169 (39.05%)	66 of 169 (39.05%)	66 of 169 (39.05%)
MOF8	MC NEAL, THOMAS	33 of 169 (19.53%)	33 of 169 (19.53%)	33 of 169 (19.53%)	33 of 169 (19.53%)	33 of 169 (19.53%)
MOF9	MILLER, JOSEPH	58 of 169 (34.32%)	58 of 169 (34.32%)	58 of 169 (34.32%)	58 of 169 (34.32%)	58 of 169 (34.32%)
MOF5	Miller, Robert	50 of 169 (29.59%)	50 of 169 (29.59%)	50 of 169 (29.59%)	50 of 169 (29.59%)	50 of 169 (29.59%)
14-0032	Moore, Jeffrey	21 of 169 (12.43%)	21 of 169 (12.43%)	21 of 169 (12.43%)	21 of 169 (12.43%)	21 of 169 (12.43%)
6210	Roembke, Steven	32 of 169 (18.93%)	32 of 169 (18.93%)	32 of 169 (18.93%)	32 of 169 (18.93%)	32 of 169 (18.93%)
2011-Int02	Rogers, Devin	8 of 169 (4.73%)	8 of 169 (4.73%)	8 of 169 (4.73%)	8 of 169 (4.73%)	8 of 169 (4.73%)
MOP28	SCHMALE, RICHARD	49 of 169 (28.99%)	49 of 169 (28.99%)	49 of 169 (28.99%)	49 of 169 (28.99%)	49 of 169 (28.99%)
10-00023	Small, Jeremy	36 of 169 (21.30%)	36 of 169 (21.30%)	36 of 169 (21.30%)	36 of 169 (21.30%)	36 of 169 (21.30%)
MOF1	SULLIVAN, SCOTT	39 of 169 (23.08%)	39 of 169 (23.08%)	39 of 169 (23.08%)	39 of 169 (23.08%)	39 of 169 (23.08%)
6207	Virrig, Christopher	40 of 169 (23.67%)	40 of 169 (23.67%)	40 of 169 (23.67%)	40 of 169 (23.67%)	40 of 169 (23.67%)
12-0029	Weycker, Dean	0 of 169 (0.00%)	0 of 169 (0.00%)	0 of 169 (0.00%)	0 of 169 (0.00%)	0 of 169 (0.00%)
6206	ZWETTLER, BRIAN	39 of 169 (23.08%)	39 of 169 (23.08%)	39 of 169 (23.08%)	39 of 169 (23.08%)	39 of 169 (23.08%)
Total Number of Runs for the Department:						169

Search Criteria	
Dates	From 01/01/2015 To 06/05/2015 (mm/dd/yyyy)
Service	City of Monona Fire Department
Staff	All
Shift	All
Apparatus	All
Station	All
Alarm Type	All
Zone/District	All

Report Description



Average Turnout per Incident
From 01/01/15 To 06/05/15
Report Printed On: 06/05/2015

	Total Number of Incidents	Total Number of Responding Personnel	Average Turnout per Incident
City of Monona Fire Department	169	1092	6
Total	169	1092	6

Search Criteria	
Dates	From 01/01/2015 To 06/05/2015 (mm/dd/yyyy)
Service	City of Monona Fire Department
Staff	All
Apparatus	All
Station	All
Alarm Type	All
Zone/District	All



Report Description



Annual Alarm Summary Report

Reporting Between: 01/01/2015 - 06/03/2015
Printed On: 06/03/2015

Situation	Jan 15	Feb 15	Mar 15	Apr 15	May 15	Jun 15	Total
100 Series Fire	1	1	4	3	2	0	11
300 Series Rescue & Emergency Medical Service Incident	18	10	13	21	13	0	75
400 Series Hazardous Condition(No fire)	3	0	0	1	0	0	4
500 Series Service Call	3	0	4	1	1	0	9
600 Series Good Intent Call	6	4	5	2	2	1	20
700 Series False Alarm & False Call	9	9	11	13	5	0	47
900 Series Special Incident Type	0	0	0	0	1	0	1
Grand Total	40	24	37	41	24	1	167

Search Criteria

Dates: From 01/01/2015 To 06/03/2015 (mm/dd/yyyy)
Service: City of Monona Fire Department



Report Description



Call Summary Report
From 01/01/15 To 06/05/15
Report Printed On: 06/05/2015

Response Code	#	%
Not Applicable	1	0.21%
No Lights and Sirens	157	33.12%
Lights and Sirens	304	64.14%
Initial No Lights or Sirens, Upgraded to Lights and Sirens	6	1.27%
Initial Lights and Sirens, Downgraded to No Lights or Sirens	6	1.27%
Total	474	100.00%
Transport Code	#	%
Not Applicable	191	40.30%
No Lights or Sirens	245	51.69%
Lights and Sirens	35	7.38%
Initial No Lights or Sirens, Upgraded to Lights and Sirens	2	0.42%
Initial Lights and Sirens, Downgraded to No Lights or Sirens	1	0.21%
Total	474	100.00%
Response Disposition	#	%
Treated, Transported by Private Vehicle	2	0.42%
Treated, Transported by Law Enforcement	5	1.05%
Treated, Transported by EMS (ALS)	283	59.70%
Treated and Released	15	3.16%
Standby Only - No Patient Contacts	31	6.54%
Standby Only - Fire	39	8.23%
Patient Refused Care	23	4.85%
No Treatment Required - Lift Assist	16	3.38%
No Treatment Required	14	2.95%
No Patient Found	20	4.22%
Dead at Scene	4	0.84%
Cancelled - Prior to EnRoute/Arrival	16	3.38%
Cancelled	5	1.05%
Agency Assist	1	0.21%
Total	474	100.00%
Response Request	#	%
Mutual Aid	6	1.27%
Intercept	3	0.63%
Closest ALS Reponse	18	3.80%
911 Response (Scene)	447	94.30%
Total	474	100.00%
Responding Unit	#	%
MOM60	460	97.05%
MOR60	13	2.74%
MOR62	1	0.21%
Total	474	100.00%

Search Criteria	
Dates	From 01/01/2015 To 06/05/2015 (mm/dd/yyyy)
Service	City of Monona Fire Department
Staff	All Active
Unit	All
Call Sign	All
Zone/District	All
Type of Service Requested	All
Patient Disposition	All



Call Summary Report
From 01/01/14 To 12/31/14
Report Printed On: 06/05/2015

Response Code	#	%
Not Applicable	5	0.44%
No Lights and Sirens	455	39.88%
Lights and Sirens	649	56.88%
Initial No Lights or Sirens, Upgraded to Lights and Sirens	11	0.96%
Initial Lights and Sirens, Downgraded to No Lights or Sirens	18	1.58%
Unknown	3	0.26%
Total	1141	100.00%
Transport Code	#	%
Not Applicable	455	39.88%
No Lights or Sirens	620	54.34%
Lights and Sirens	59	5.17%
Initial No Lights or Sirens, Upgraded to Lights and Sirens	3	0.26%
Initial Lights and Sirens, Downgraded to No Lights or Sirens	3	0.26%
Unknown	1	0.09%
Total	1141	100.00%
Response Disposition	#	%
Treated, Transported by Private Vehicle	3	0.26%
Treated, Transported by Law Enforcement	6	0.53%
Treated, Transported by EMS (ALS)	686	60.12%
Treated, Transferred Care	2	0.18%
Treated and Released	31	2.72%
Standby Only - No Patient Contacts	69	6.05%
Standby Only - Fire	145	12.71%
Patient Refused Care	44	3.86%
No Treatment Required - Lift Assist	47	4.12%
No Treatment Required	25	2.19%
No Patient Found	32	2.80%
Dead at Scene	14	1.23%
Cancelled - Prior to EnRoute/Arrival	30	2.63%
Cancelled - Out of Primary Service Area	1	0.09%
Cancelled	6	0.53%
Total	1141	100.00%
Response Request	#	%
Medical Transport	1	0.09%
911 Response (Scene)	1140	99.91%
Total	1141	100.00%
Responding Unit	#	%
MOM60	1096	96.22%
MOM62	5	0.44%
MOR60	32	2.81%
MOR62	6	0.53%
Total	1139	100.00%

Search Criteria	
Dates	From 01/01/2014 To 12/31/2014 (mm/dd/yyyy)
Service	City of Monona Fire Department
Staff	All Active
Unit	All
Call Sign	All
Zone/District	All
Type of Service Requested	All
Patient Disposition	All



Mutual Aid Given/Received (Summary) Report
City of Monona Fire Department
 From 01/01/15 To 06/05/15
 Report Printed On: 06/05/2015

Given	Incidents	FT Paid Empl.	FT Unpaid Empl.	PT Paid and PT Unpaid Empl.	PT Paid Empl.	PT Unpaid Empl.	Career	Volunteer	Engines	Aerial	Other	
*NA	8	11	33		0	1	6	12	39	11	0	42
BLOOMING GROVE FIRE DEPARTMENT	3	0	10		0	0	2	0	12	7	0	5
FITCHBURG FIRE DEPARTMENT	2	0	7		0	0	5	0	12	3	0	9
MADISON FIRE DEPARTMENT	1	0	7		0	0	1	0	8	2	0	6
MAPLE BLUFF FIRE DEPARTMENT	1	0	1		0	0	1	0	2	0	0	2
MCFARLAND FIRE DEPARTMENT	3	0	15		0	0	1	0	16	0	0	16
OREGAN FIRE AND EMS DISTRICT	1	1	3		0	0	0	1	3	0	0	4
TOWN OF MADISON FIRE DEPARTMENT	2	0	8		0	0	3	0	11	0	0	11
Total	21	12	84		0	1	19	13	103	23	0	95

Received	Incidents	FT Paid Empl.	FT Unpaid Empl.	PT Paid and PT Unpaid Empl.	PT Paid Empl.	PT Unpaid Empl.	Career	Volunteer	Engines	Aerial	Other	
*NA	2	3	6		0	0	2	3	8	4	0	7
BLOOMING GROVE FIRE DEPARTMENT	21	13	84		0	2	18	15	102	39	0	78
MADISON FIRE DEPARTMENT	6	3	32		0	0	6	3	38	7	0	34
MCFARLAND FIRE DEPARTMENT	1	3	4		0	1	1	4	5	2	0	7
Total	30	22	126		0	3	27	25	148	52	0	126

Search Criteria
 Dates: From 01/01/2015 To 06/05/2015 (mm/dd/yyyy)
 Service: City of Monona Fire Department

Report Description



Mutual Aid Given/Received (Summary) Report
City of Monona Fire Department
 From 01/01/14 To 12/31/14
 Report Printed On: 06/05/2015

Given	Incidents	FT Paid Empl.	FT Unpaid Empl.	PT Paid and PT Unpaid Empl.	PT Paid Empl.	PT Unpaid Empl.	Career	Volunteer	Engines	Aerial	Other
*NA	6	6	19	0	1	2	7	21	2	0	26
BLOOMING GROVE FIRE DEPARTMENT	4	3	13	0	0	1	3	14	5	0	13
FITCHBURG FIRE DEPARTMENT	1	2	6	0	1	0	3	6	0	0	9
MADISON FIRE DEPARTMENT	3	2	17	0	0	1	2	18	7	0	13
MCFARLAND FIRE DEPARTMENT	4	5	18	0	0	6	5	24	0	0	29
MONONA FIRE DEPARTMENT	1	1	1	0	0	0	1	1	0	0	2
TOWN OF MADISON FIRE DEPARTMENT	17	8	54	0	0	7	8	61	0	0	70
Total	36	27	128	0	2	17	29	145	14	0	162

Received	Incidents	FT Paid Empl.	FT Unpaid Empl.	PT Paid and PT Unpaid Empl.	PT Paid Empl.	PT Unpaid Empl.	Career	Volunteer	Engines	Aerial	Other
*NA	1	0	0	0	0	0	0	0	0	0	0
BLOOMING GROVE FIRE DEPARTMENT	59	56	171	0	1	19	57	190	90	0	158
MADISON FIRE DEPARTMENT	25	28	71	0	0	14	28	85	36	0	78
TOWN OF MADISON FIRE DEPARTMENT	3	1	6	0	0	0	1	6	2	0	5
Total	88	85	248	0	1	33	86	275	128	0	241

Search Criteria
 Dates: From 01/01/2014 To 12/31/2014 (mm/dd/yyyy)
 Service: City of Monona Fire Department

Report Description