

DRAFT

RECEIVED
 OCT 20 2008
 CITY OF MONONA

PARTIAL SITE PLAN
 SCALE: T-20'-0" • 24X36 FORMAT ONLY

INDEX OF DRAWINGS
 DRAWINGS IN HALF TONE FONT, IF ANY, ARE NOT A PART OF THIS SET

A1	TITLE SHEET / PARTIAL SITE PLAN
A2	EXISTING BUILDING ELEVATIONS
A3	NEW BUILDING ELEVATIONS

APPROVALS

OWNER	ARCHITECT	ENGINEER

CITY REVIEW AGENCY

GENERAL NOTES

- THE SET OF DRAWINGS IS SCHEMATIC AND INTENDED FOR CITY / CLIENT AND ENGINEERING REVIEW / AND PLANNING COMMISSION APPROVAL.
- THE PARTIAL SITE PLAN SHEET A1 WAS IMPORTED AND ROTATED TO MAKE THE BUILDING ORTHOGRAPHIC TO THE SOUTH PROPERTY LINE. NEAREST TO THE 'NEW' BUILDING. THIS REQUIRED AN ADDITIONAL MINOR ROTATION ON THE LATEST PARTIAL SITE PLAN SENT FROM ROYAL OAK ENGINEERING.
- REFER TO THE SURVEY FROM ROYAL OAK ENGINEERING FOR COMPLETE INFORMATION BECAUSE THIS SITE PLAN HAS SOME LAYERS TURNED OFF & SOME INFORMATION ERASED FOR CLARITY.
- NOTE THAT THE OVERALL DIMENSION OF THE NEW BUILDING, AND ALSO THE PART OF THE EXISTING BUILDING TO REMAIN MAY NOT BE ACCURATE, BECAUSE THE ADDITION OF END WALLS AT THE PLACE THE BUILDING IS CUT MAY INCREASE THE OVERALL DIMENSION BY A FEW INCHES ON BOTH THE EXISTING AND NEW PLANS.
- THE REMOVED PORTION OF THE BUILDING WILL BE USED FOR TEMPORARY PARKING.
- LANDSCAPING / STREET SIGNAGE IF ANY / EXTERIOR LIGHTING ARE NOT SHOWN HERE. SEE THE ROYAL OAK SITE SURVEY / PLAN FOR TOPOGRAPHY AND ALSO THE REFUSE ENCLOSURE LOCATION AND DETAILS.
- THE BUILDING RELOCATION / SITE AND SLAB & FOUNDATION PREPARATION / NEW EXTERIOR DESIGN & STRUCTURAL ENGINEERING ARE ALL BY OTHERS AT THIS TIME AND ARE NOT PRESENTLY WITHIN THE SCOPE OF THE ARCHITECT'S SCOPE OF SERVICES. IT IS ANTICIPATED THAT SOME OF THESE ITEMS WILL BE INCLUDED IN THE ARCHITECTURAL SCOPE OF WORK AND RESPONSIBILITY IN THE NEAR FUTURE. ACCORDINGLY, THE BUILDING FLOOR PLAN (TO BE VIRTUALLY IDENTICAL TO THE EXISTING FLOOR PLAN) ALONG WITH SOME OF THE AFOREMENTIONED ITEMS ABOVE, WILL BE PROVIDED AFTER PLANNING COMMISSION APPROVAL, ON A FORMAL BUILDING DEPARTMENT SUBMITTAL TO THE CITY OF MONONA.

PROJECT DATA

PROJECT DESCRIPTION THE RELOCATION OF A PORTION OF AN EXISTING BUILDING BY OTHERS INTO A NEW SLAB & FOUNDATION ON A DIFFERENT PART OF THE SITE.	OWNER LUMMA PROPERTIES LLC 1111 S. 10TH STREET MADISON, WI 53704 P: 608.274.4800 F: 608.274.4800
PROJECT ADDRESS LUMMA PROPERTIES LLC / 900 BLOCK OF EAST BROADWAY MONONA, WI 53699 / 6774	TENANT LUMMA PROPERTIES LLC - MAE HUNTER
OCCUPANCY M - MERCHANTILE	ARCHITECT OF RECORD MARK DEER & ARCHITECT ASS 1011 MONONA DR. / SUITE 27 MADISON, WI 53714 P: 608.274.4800 / F: 608.274.4800 E: MARK@MARKDEERARCHITECT.COM
CONSTRUCTION TYPE TYPE 6 - METAL FRAME	SURVEY / SITE ENGINEERING ROYAL OAK ENGINEERING INC. 1011 MONONA DR. / SUITE 27 MADISON, WI 53714 P: 608.274.4800 / F: 608.274.4800 E: ROYAL@ROYALENGINEERINGINC.COM
FIRE PROTECTION NEW - FIRE ALARMS CLAY IN THE EXTERIOR	AREA 7200 SF GROSS AREA

FONTS & PEN PROTOCOL

- THE FOLLOWING FONT AND PEN PROTOCOLS ARE USED: ARCHITECT / ARCHITECT / ARCHITECT / ARCHITECT
- THE TYPICAL PEN WEIGHT / COLORING / SIZE IS 0.35 MM & THE POINT AT NOTED BELOW.

LINE TYPE	THICKNESS	COLOR
BOUNDARY	0.35	BLACK
PROPERTY LINE	0.35	RED
CONSTRUCTION	0.35	GREEN
EXISTING	0.35	BROWN
RELOCATED	0.35	PINK
TO BE REMOVED	0.35	GRAY
NEW	0.35	BLUE
CONCRETE	0.35	YELLOW
ASPHALT	0.35	ORANGE
GRAVEL	0.35	PURPLE
WOOD	0.35	TEAL
IRON	0.35	MAGENTA
STEEL	0.35	CYAN
GLASS	0.35	BLACK
PLASTER	0.35	BLACK
PAINT	0.35	BLACK
TEXT	10	BLACK
TEXT	8	BLACK
TEXT	6	BLACK
TEXT	4	BLACK
TEXT	3	BLACK
TEXT	2	BLACK
TEXT	1	BLACK

- MY FONT AND PEN PROTOCOLS WILL BE PROVIDED UPON REQUEST.
- PLEASE SEE THE LATEST GENERAL NOTE ON THE SET FOR PROJECT REVISIONS PROTOCOLS.

NOT FOR CONSTRUCTION

MONONA PLANNING DEPARTMENT

MARK DEER & ARCHITECT ASS
 1011 MONONA DR. / SUITE 27
 MADISON, WI 53714
 P: 608.274.4800 / F: 608.274.4800
 E: MARK@MARKDEERARCHITECT.COM

LUMMA PROPERTIES LLC
 1111 S. 10TH STREET
 MADISON, WI 53704
 P: 608.274.4800 / F: 608.274.4800

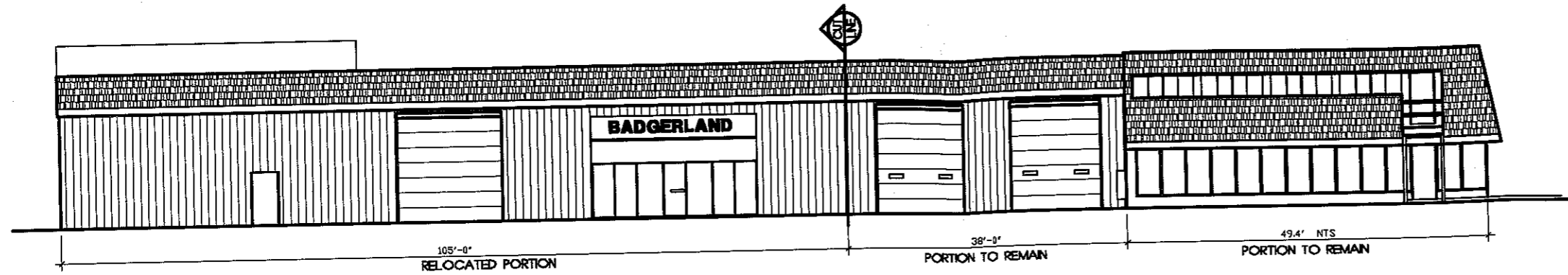
ROYAL OAK ENGINEERING INC.
 1011 MONONA DR. / SUITE 27
 MADISON, WI 53714
 P: 608.274.4800 / F: 608.274.4800
 E: ROYAL@ROYALENGINEERINGINC.COM

PARTIAL SHEET PLAN
 A1

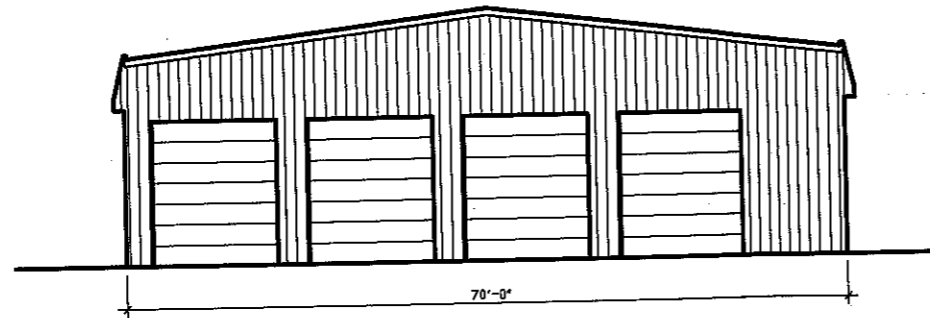
LBSM PROPERTIES LLC

MONONA • WISCONSIN

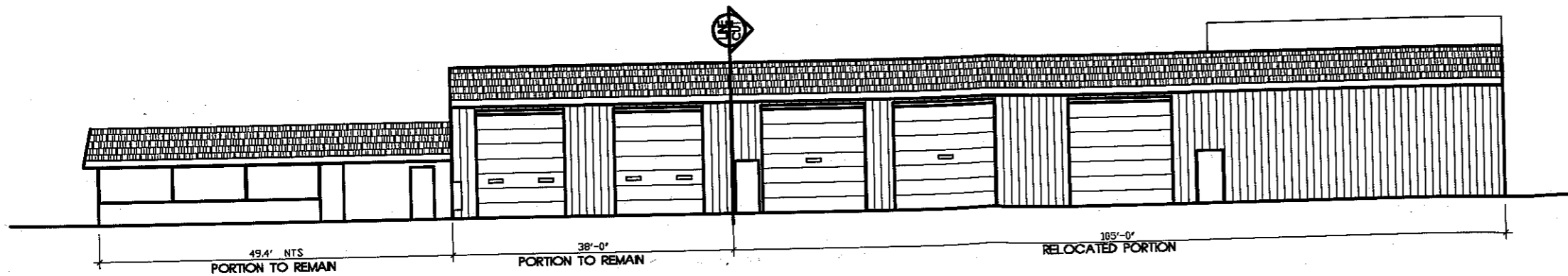
ELEVATIONS



1 EXISTING WEST ELEVATION
1/8" = 1'-0" • 24X36 FORMAT ONLY



2 EXISTING NORTH ELEVATION
1/8" = 1'-0" • 24X36 FORMAT ONLY



3 EXISTING EAST ELEVATION
1/8" = 1'-0" • 24X36 FORMAT ONLY

SHEET NOTES

1. VERIFY ALL DIMENSIONS
2. MATERIAL & COLOR TO BE SELECTED TO MATCH A COMPLEMENT EXISTING
3. GUARDPOSTS ARE NOT SHOWN
4. BRACING METERS / WIND WALL PENETRATIONS & OTHER WEAR DETAILS ARE NOT SHOWN HERE

FONTS & PEN PROTOCOL

1. THE FOLLOWING PC AND CDS FONT FILES ARE USED: ARCHTTL / ARCHD / ARCHL / ARCHR / BOLDROW
 2. THE TYPICAL PEN WEIGHT / SPACING - 300 MIL @ THE POINT AS NOTED BELOW
- | | |
|----------------|---------|
| LINE WEIGHT | 300 MIL |
| TEXT WEIGHT | 300 MIL |
| TEXT SPACING | 300 MIL |
| TEXT HEIGHT | 300 MIL |
| TEXT WIDTH | 300 MIL |
| TEXT DEPTH | 300 MIL |
| TEXT THICKNESS | 300 MIL |
| TEXT SPACING | 300 MIL |
| TEXT HEIGHT | 300 MIL |
| TEXT WIDTH | 300 MIL |
| TEXT DEPTH | 300 MIL |
| TEXT THICKNESS | 300 MIL |
3. MY FONT AND CDS FILES WILL BE PROVIDED UPON REQUEST
 4. PLEASE SEE THE LAST GENERAL NOTE ON THIS SHEET FOR PROJECT SPECIFIC DRAWING PROTOCOLS

NOT FOR CONSTRUCTION

MONONA PLANNING REVIEW SET

MILK JETTY ARCHITECT
207 MONONA DRIVE, SUITE 27 • MONONA, WISCONSIN 53151 • 608.785.1234

LBSM PROPERTIES LLC
114 STATE STREET
MONONA, WISCONSIN 53151

EXISTING BUILDING ELEVATIONS

A2

SHEET NOTES

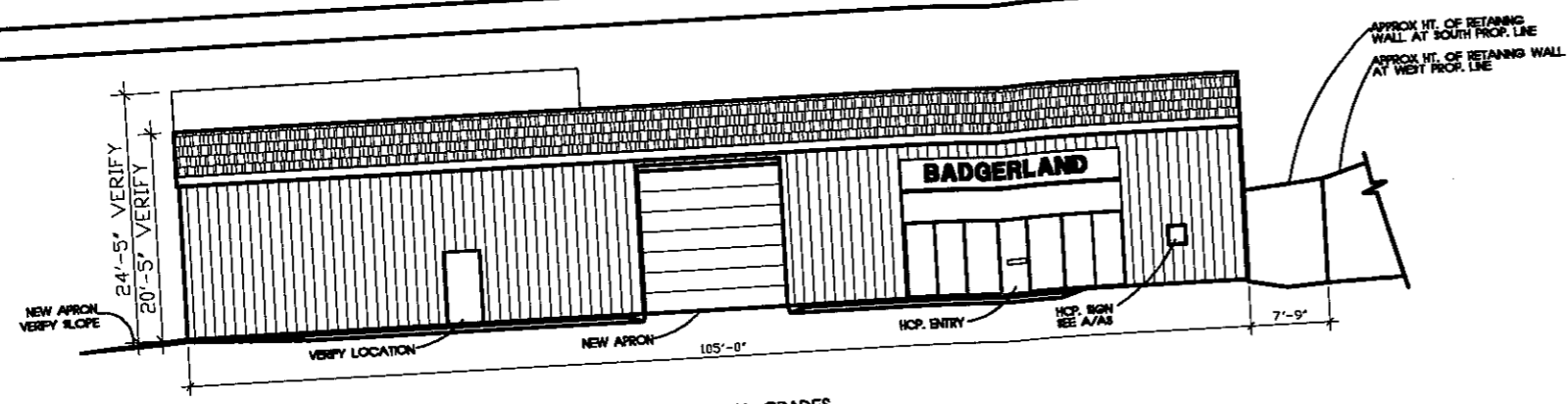
1. VERIFY ALL DIMENSIONS
2. MATERIALS & COLORS TO BE SELECTED TO MATCH A COMPLETE EXHIBIT
3. QUANTITIES ARE NOT SHOWN
4. SLOTTED METAL / IMAG WALL FOOTPRINT & OTHER RELATED DETAILS ARE NOT SHOWN HERE

ACCESSIBLE SIGNAGE

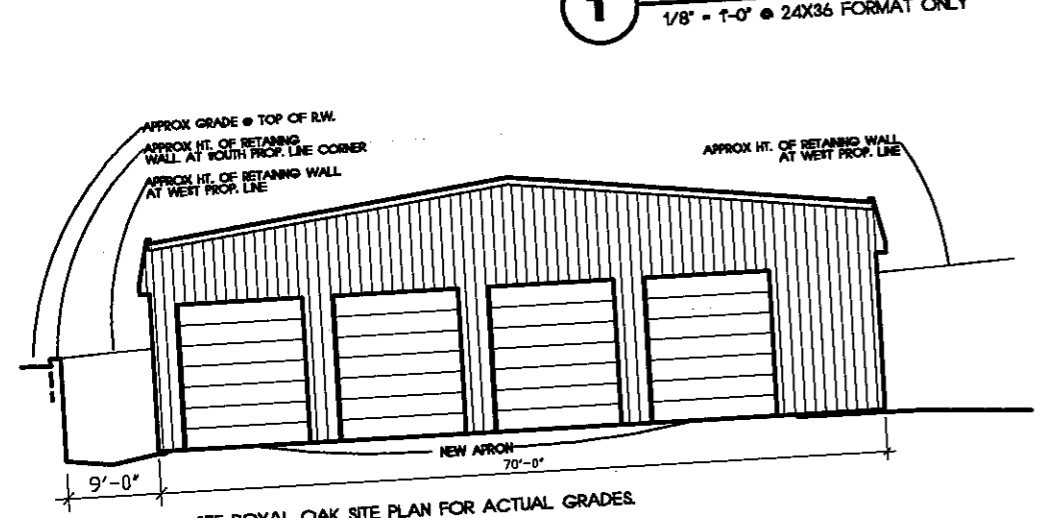


1. PROVIDE WALL MOUNTED METAL SIGN WITH INTERNATIONAL SYMBOL AT ACCESSIBLE PARKING STALL
2. MATERIAL, SIZE, LOCATION, COLORS, MOUNTING, AND MOUNTING HEIGHT / LOCATION TO BE IN ACCORDANCE WITH CURRENT ADA / ADAAG SPECIFICATIONS

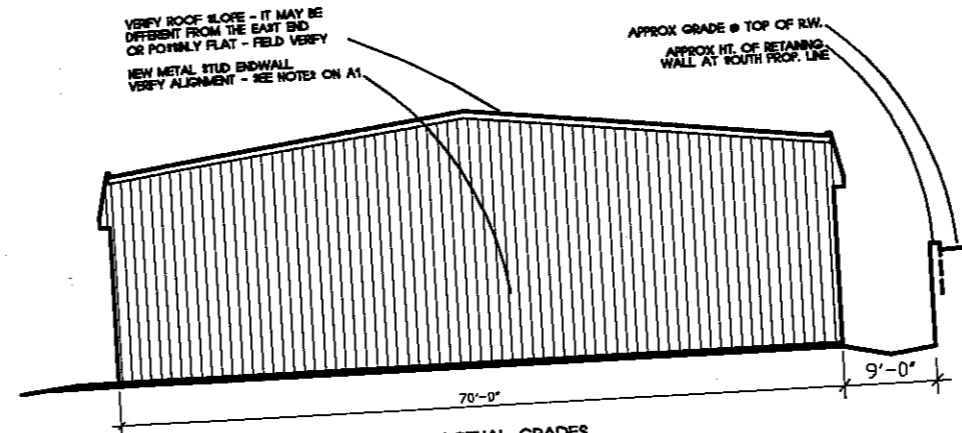
A ACCESSIBILITY SIGN
N.T.S.



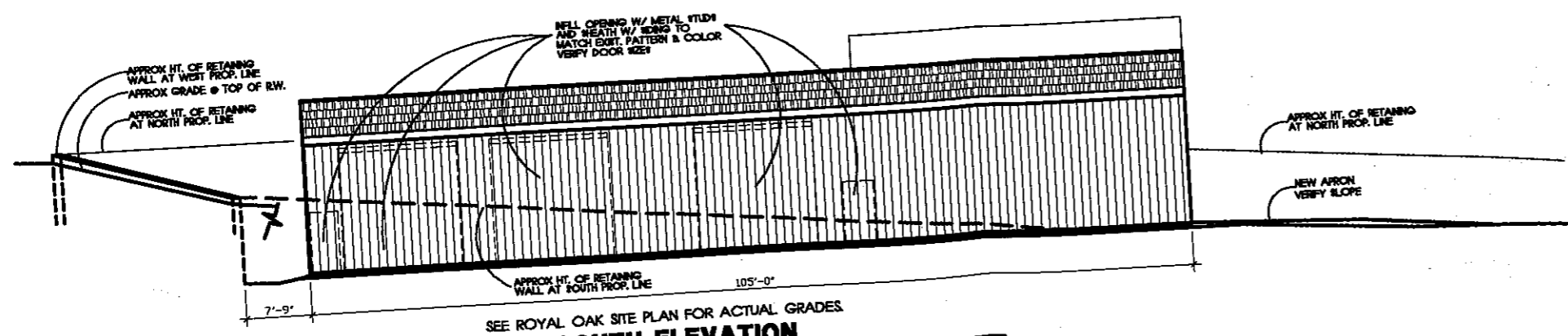
SEE ROYAL OAK SITE PLAN FOR ACTUAL GRADES.
1 NEW NORTH ELEVATION
1/8" = 1'-0" @ 24X36 FORMAT ONLY



SEE ROYAL OAK SITE PLAN FOR ACTUAL GRADES.
2 NEW EAST ELEVATION
1/8" = 1'-0" @ 24X36 FORMAT ONLY



SEE ROYAL OAK SITE PLAN FOR ACTUAL GRADES.
3 NEW WEST ELEVATION
1/8" = 1'-0" @ 24X36 FORMAT ONLY



SEE ROYAL OAK SITE PLAN FOR ACTUAL GRADES.
4 NEW SOUTH ELEVATION
1/8" = 1'-0" @ 24X36 FORMAT ONLY

FONTS & PEN PROTOCOL

1. THE FOLLOWING ARE THE FONT FILES AND TYPES TO BE USED: ARCHITECT / ARCADE / FRANK / BOLDLINE
2. THE TYPICAL PEN WEIGHT / COLOR: 3/32" / 7/8" / 1/2" / 3/4" / 5/8" / 1/4" / 3/8" / 1/8" / 1/16"
3. ALL FONT AND PEN FILES WILL BE PROVIDED UPON REQUEST.
4. PLEASE SEE THE LATEST GENERAL NOTE ON THE WEBSITE FOR PROJECT SPECIFIC DRAFTING PROTOCOLS.

NOT FOR CONSTRUCTION

MONONA PLANNING SET

MARK DERTY ARCHITECT
200 LEXINGTON LANE • SUITE 21 • MONONA, WISCONSIN 53151 • 608.222.2222

LEON PROPERTIES LLC
200 LEXINGTON LANE • SUITE 21 • MONONA, WISCONSIN 53151 • 608.222.2222

THE CLINCH GROUP
200 LEXINGTON LANE • SUITE 21 • MONONA, WISCONSIN 53151 • 608.222.2222

ELEVATIONS

A3