

**Figure 1:
Natural
Communities
of Woodland
Park.**

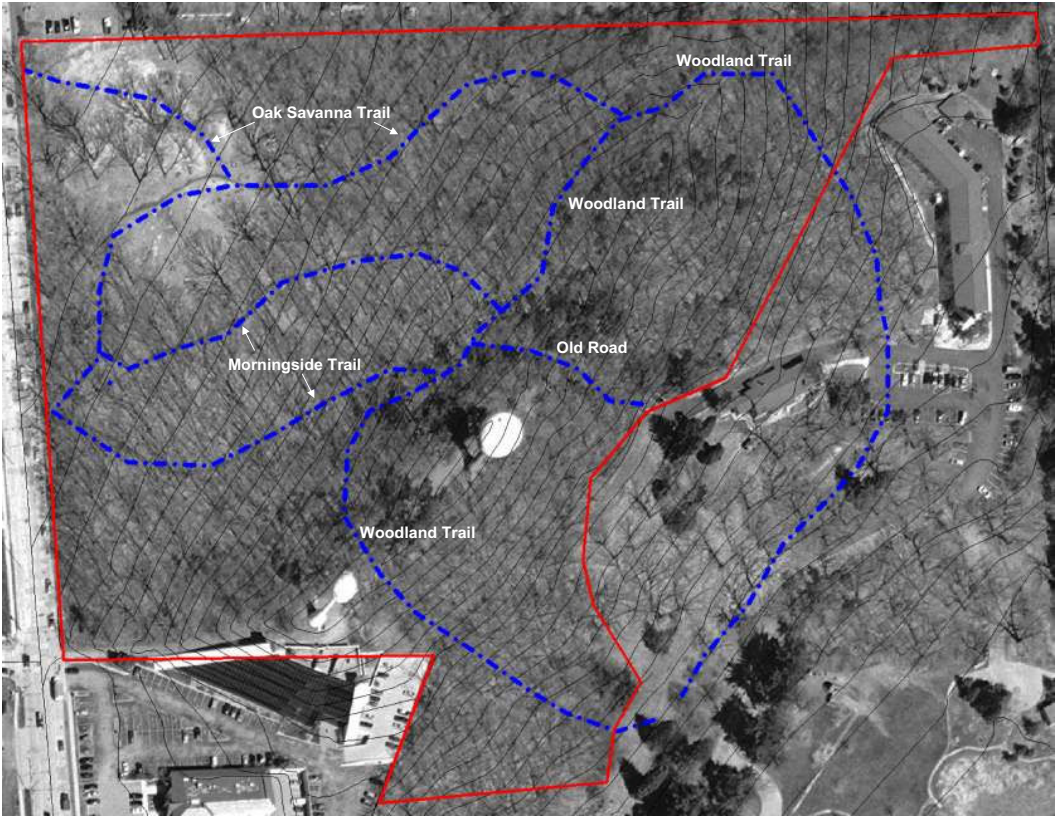
(Source: Dane County Land Information Office, 2005 Aerial Photography.)

Natural Community 1: Oaks & Mixed Hardwoods, 12 acres.

Natural Community 2: White Oak Woodland, 2.5 acres.

Natural Community 3: Oak Savanna, 1.5 acres.

- - - - - = Management Unit Boundaries
- = Natural Community & Park Boundaries



**Figure 2:
Trails &
Topography
(4 Ft.
Contours).**

(Source: Dane County Land Information Office, 2005 Aerial Photography.)

- - - = Foot Trails
- = Park Boundaries



Figure 3: Soils.

(Source: National Cooperative
Soil Survey – Web Soil Survey)

Kidder loam (KdD2)
McHenry silt loam (MdC2)
St. Charles silt loam (ScB)

- = Park Boundaries
- = Soil Unit Boundaries



Figure 4: Garlic Mustard Management Units.

(Source: Dane County Land Information Office. 2005 Aerial Photography.)

— = Management Unit & Park Boundaries

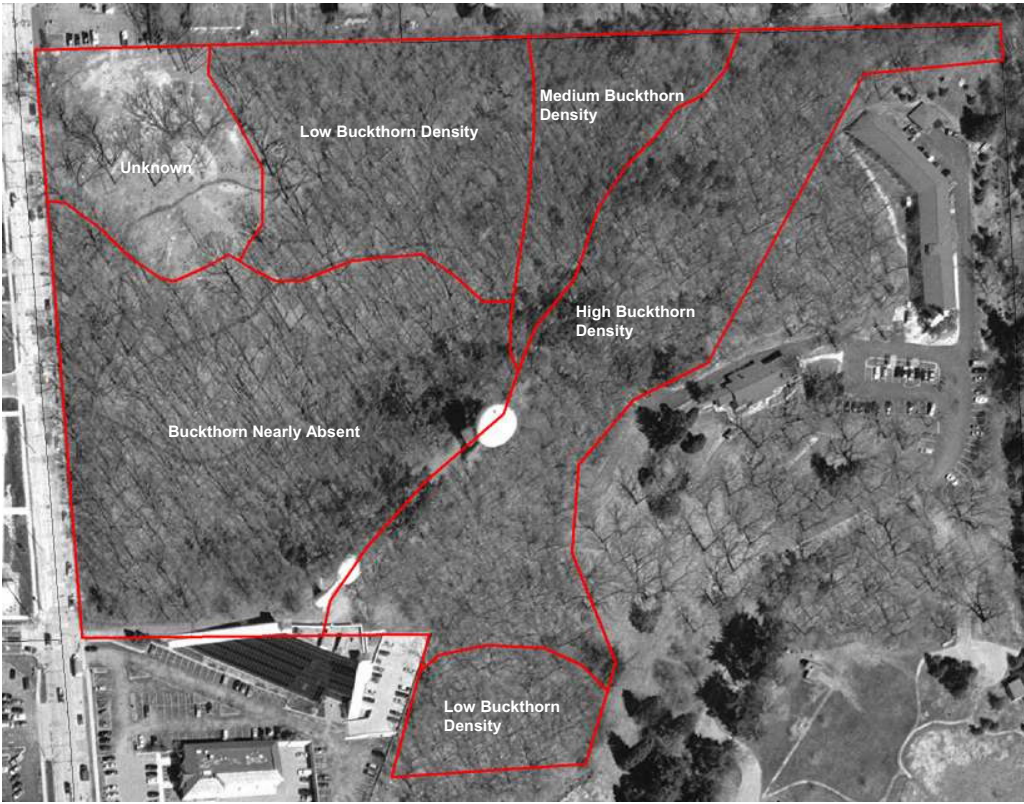


Figure 5: Buckthorn Management Units.

(Source: Dane County Land Information Office, 2005 Aerial Photography.)

— = Management Unit & Park Boundaries



**Figure 6:
Locations of
Honeysuckle,
Black Locust,
& Norway
Maple
Colonies.**

(Source: Dane County Land Information Office, 2005 Aerial Photography.)